

**SCHOOL DISTRICT OF MANAWA
FINANCE COMMITTEE MEETING
AGENDA**

Google Meet joining info

Video call link: <https://meet.google.com/fkf-nyec-hus>

Or dial: (US) +1 262-372-9426 PIN: 203 346 273#

Date: July 13, 2022

Time: 5:00 p.m.

**MES Board Room
800 Beech Street, Manawa**

**Hybrid Meeting Format (In-person Meeting for Board of Education at MES Board Room,
800 Beech Street & Virtual Components)**

Board Committee Members: Jepson (C), Fietzer, Reiersen

In Attendance:

Timer: _____ **Recorder:** _____

1. Consider Endorsement of Fund 46 - Long-term Capital Improvement Trust Fund as presented (Action)
2. Food Service Vending Machine Options (Information / Action)
3. Little Wolf High School/Manawa Middle School Cafeteria Furniture Proposal (Information / Action)
4. School District of Manawa Benefits Summary (Information)
5. Monthly Financial Summary (Information)
6. School Finance 101 (Information)
 1. Revenue Limit Worksheet
7. Next Finance Committee Meeting Date: _____
8. Next Finance Committee Items:
 1. School Finance 101 - Audit
 2. Occupational Therapist Services for 2022-23 School Year
 3. OPEB Benefit Proposal
9. Adjourn



School District of Manawa
Students Choosing to Excel, Realizing Their Strengths

To: Board of Education
From: Carmen O'Brien
cc: Dr. Melanie Oppor
Date: 7/11/2022
Re: Fund 46 Deposit

Recommendation

I recommend depositing an additional \$50,000 into Fund 46, the long-term capital improvement trust fund for the 2021-22 budget year.

Rationale

The majority of the 2021-22 spending has been recorded, though it will be some weeks yet before I will have completed all of the bookkeeping. After review, it appears that the District has underspent the 2021-22 budget by enough that placing an additional \$50,000 into Fund 46 will not affect the overall financial standing of the SDM. Even with this deposit, funds will carry over into fund balance to be used for projects in the 2022-23 school year.

School District of Manawa

800 Beech Street
Manawa, WI 54949

Phone: (920) 596-2525
Fax: (920) 596-5308

**Little Wolf High School
Manawa Middle School**

515 E. Fourth St
Manawa, WI 54949

Phone: (920) 596-2524
Fax: (920) 596-2655

Manawa Elementary

800 Beech Street
Manawa, WI 54949

Phone: (920) 596-2238
Fax: (920) 596-5339

ManawaSchools.org



/ ManawaSchools



/ ManawaSchools



School District of Manawa
Students Choosing to Excel, Realizing Their Strengths

To: Board of Education
From: Carmen O'Brien
cc: Dr. Melanie Oppor
Date: 7/11/2022
Re: Food Service Vending Machine Options

Mrs. Brenda Suehs procured information about potential vending machine options for the Manawa Middle School/Little Wolf High School. To maximize sales, it is recommended to have a machine that students can use their food service accounts with. Our student information system, Skyward, recommends using a company called Venducation. I have included their proposal in this packet.

Vend-ucation Machines:

MAX ST5000 ELEVATOR	Refrigerated Reimbursable Meals could be sold \$13,975
NutriSnack 5000	Not-refrigerated \$9,995
SUMMIT 500	Refrigerated Bottles and Cans - beverages \$9,995

Mrs. Suehs also looked at vending machines that the Food Service department could purchase and sell snacks (not meals) out of. These would provide cash sales only. Different models can cost anywhere between \$5,000-\$7,000. These are not refrigerated and would not interface with Skyward.

I propose bringing this information to the Student Council for feedback.

School District of Manawa

800 Beech Street
Manawa, WI 54949

Phone: (920) 596-2525
Fax: (920) 596-5308

**Little Wolf High School
Manawa Middle School**

515 E. Fourth St
Manawa, WI 54949
Phone: (920) 596-2524
Fax: (920) 596-2655

Manawa Elementary

800 Beech Street
Manawa, WI 54949

Phone: (920) 596-2238
Fax: (920) 596-5339

ManawaSchools.org



/ ManawaSchools

/ ManawaSchools



SCHOOL DISTRICT OF MANAWA

Students Choosing To Excel, Realizing Their Strengths.

Vending Quote



Afternoon Brenda,

It was so great speaking with you and learning more about Manawa. We can definitely help you with your vending needs. Linking your machines to Skyward will increase your sales. Carrying cash is not the norm anymore and kids love spending Mom and Dad's money. Parents love that students are making healthy choices and they know where their student is, especially after school.

Don't be afraid of the picture to the right. My machines are five years old. So, this is me changing out a part because I am too stubborn to wait even one day for my vending tech. I am just sending you proof that I am a crazy vending lady, lol.

[CLICK HERE](#) for a video on the machines where I look wayyyy better than in this photo. Ha!

Here is information on our cashier-less point of sales units illustrating the technology and customization options. If you have any questions, I am happy to help.

Enjoy,
Amanda Venezia
Vending Efficiency Expert
amanda@venducation.com
(617) 872-7843



MAX ST5000 ELEVATOR

Refrigerated Merchandiser

Fully customizable

Breakfasts, Lunches, A la carte or a combination

All items are vended with care as the elevator raises and then delivers the products to students. You won't worry about containers opening or being damaged at the bottom of the machine.

You have 5 rows for items. We will work together to customize the machine to fit the products that you want to vend in the exact packaging that you have on hand or intend upon using. You can even lock items out by time if you don't want an item (ie. breakfast) sold after a specific time.

\$13,975



Shown with optional 7" Touch Screen and standard Leg Covers



MAX ST5000

Additional Features

Soft Delivery Elevator

Ensures package integrity
Eliminates 2-3 foot hard drop

Glass Front Spiral Model

May be easily reconfigured if your needs change. Heated glass eliminates condensation and fogging

Electrical Requirements

115VAC/60Hz, 5.5 AMPS
(Standard wall outlet)

Internet Connection

Ethernet hard wire preferred

Additional Capabilities

Reimbursable Meals (Breakfast, Lunch, Snack, Supper) vended in clear clamshells, paper boats, or whatever you like.

[Click here to see how the elevator works](#)

NutriSnack 5000

6 Rows of Dry Snacks

These ambient machines hold so many snacks and vend super fast without the elevator (items drop straight into the retrieval tray). Often these are placed alongside the MAX machines to convert the refrigerated unit to more meals or all refrigerated items.

You will see your highest ROI in schools with mid to low free and reduced percentage.

Reminder: more machines means filling them less often, increases the efficiency of fill time, and overall you will see more revenue vs labor hours.



\$9,995



SUMMIT 500

Refrigerated Bottle and Can Beverage Merchandiser

I highly recommend these machines as opposed to putting beverages in the bottom tray of the MAX units. That is what I did because I didn't want to buy more machines and I ordered this within two months. I just couldn't keep the beverages stocked. I put more 20oz beverages in mine.

Fits 24 each of each bottle or can selection:
20oz Zero Calorie Bottled Beverages
12 - 20oz Water Bottles
12 - 20oz 100% Juice Bottles

High capacity fill ~ Fits a whole case of product
Fill less often ~ Easy to swap out products

Requirements:

Standard 120volt wall outlet and
hardwire ethernet connection needed.

\$9,995



Features

Payment System Versatility

Can be configured for cash, credit, accounts or only accounts

Skyward Interface

Level 2 VendNovation POS interface provides you with software support for the vending application and a wide range of reporting and alert capabilities. This makes vending easier and efficient.

Two Year Parts Warranty

And 90 day on site technical service

Features

ADA Compliance

48" wheelchair access for payment, selection, and retrieval

First In First Out Loading

Reduces spoilage and ensures freshness.

Free Telephone Support

Factory technicians available to talk your staff through issues or send location assistance. Available daily from 8am – 4:30pm CST

And More Features!

Training Videos

Free unlimited access to online training videos

Shipping

Delivery and installation to your school set up right where you want it.

Ivend

Guaranteed delivery hardware and software. A grid of infrared light beams across the delivery bin or elevator to ensure the selected product is delivered before the credit is cancelled, preventing lost funds.



Specifically Des Moines, Iowa

Additional Costs

Skyward Vending Licenses

Please contact your sales rep for current pricing. You will need one for each machine. If you decide to just allow the kids to select an item and do FFVP in the whole machine, you do not need this. It can always be added in the future.

VendNovation Software Support

Tracks all information for instant sales and profitability analysis. Provides automatic email alerts to notify staff of low-par inventory levels, out-of-stock conditions and even gives them the capacity to print out an exact pick list to restock each machine. System also sends error notifications like a temperature rise above 42° or that a selection would not dispense. Annual software support fee is \$240 per machine.

[Click here for more information](#)



Optional Add-Ons

Common Contact Protection

UV Light Germicidal Irradiation Feature

\$475 per machine

[Click here for more information](#)

Custom Door Wrap

MOST POPULAR

Brand with your school logo/mascot against a colorful background of your choosing.

\$350 front the machines



\$599 full 3-sided wrap

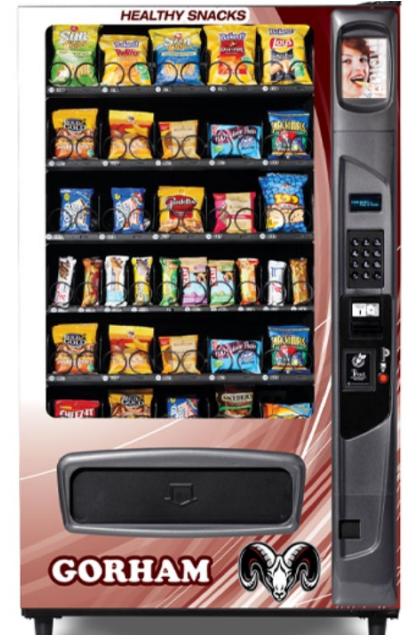
Debit/Credit Acceptance

Recommended in high adult traffic locations

Hardware costs \$400 to \$595 depending on your student ID protocol.

To note: merchant fees will be applied to each transaction

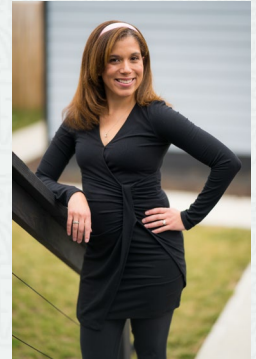
Door Wrap Examples





Don't hesitate to reach out!

Amanda Venezia
Vending Efficiency Expert
amanda@venducation.com
(617) 872-7843



info@venducation.com



www.venducation.com



800-633-1200

123 Stark Hwy So. Dunbarton, NH 03046 | Fax: 603-774-2225



School District of Manawa
Students Choosing to Excel, Realizing Their Strengths

To: Board of Education
From: Carmen O'Brien
cc: Dr. Melanie Oppor
Date: 7/11/2022
Re: Cafeteria Furniture

In May 2022, I presented a design and quote from School Specialty for new seating options for the Manawa Middle School/Little Wolf High School (MMS/LWHS) cafeteria/commons space (included in this packet for reference). This past month, I received another design and quote from Marshfield Book & Stationery, Inc. (see packet). I asked for similar design options and AmTab furnishings were recommended.

	School Specialty	Marshfield
Section 1 – 6 mobile booths	\$36,200	\$32,747.40
Section 2 – 6 high tables with stools	25,100	\$15,019.20
Section 3	\$52,400 (5 radius booths)	\$5,443.20 (6 café height tables with stools)
Section 4 – nook by the west entry	\$7,200	\$70,204.60

I propose bringing the designs to the Student Council for feedback.

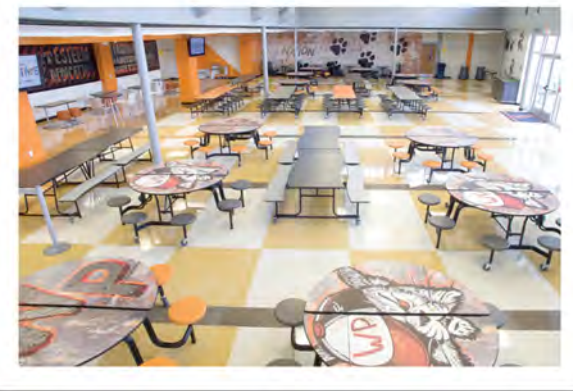


This AmTab Design Package and related information is intended only for the confidential use of the intended recipient(s). Please keep confidential. Any review, dissemination, distribution or copying of this confidential information is strictly prohibited. Any editing or modification of this confidential information is also strictly prohibited. Thank you.

*Creating Inspiring and Engaging Educational Environments
 The AmTab Way*



- Results**
- 1 - Increase Participation and Revenue
 - 2 - Increase Efficiency and Effectiveness
 - 3 - Increase School Networking and Connections



Furnish

Manufacture

Design



*The AmTab Way
 Working Together*

Page	Name
1	Cover Sheet
2	Seating Layout
3	Finish Layout
4	3D Overview
5	Product Details
6	Product Details

Page	Name
7	Product Details
8	Specifications
9	Finishes
10	Project Notes & Furniture Schedule

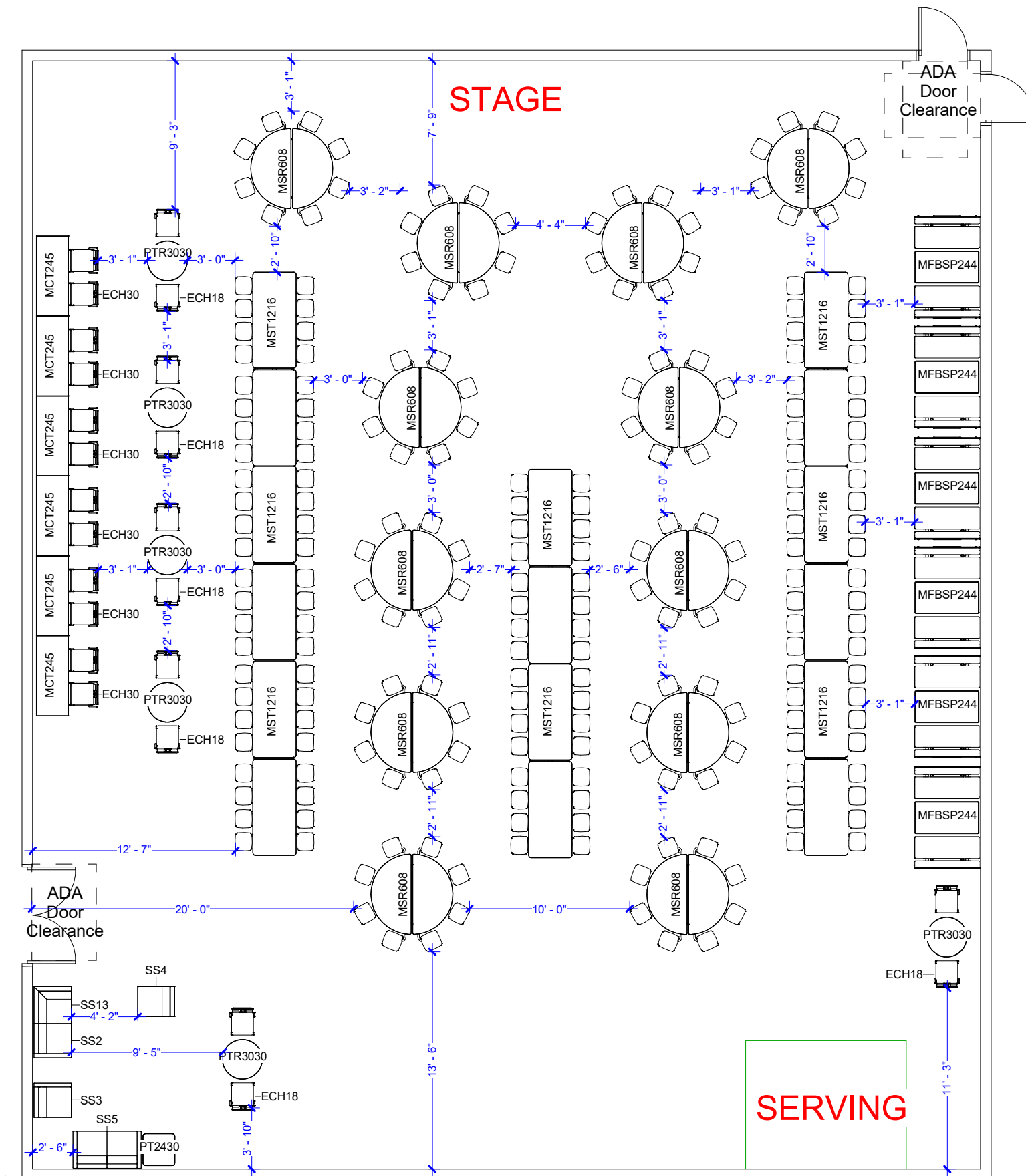
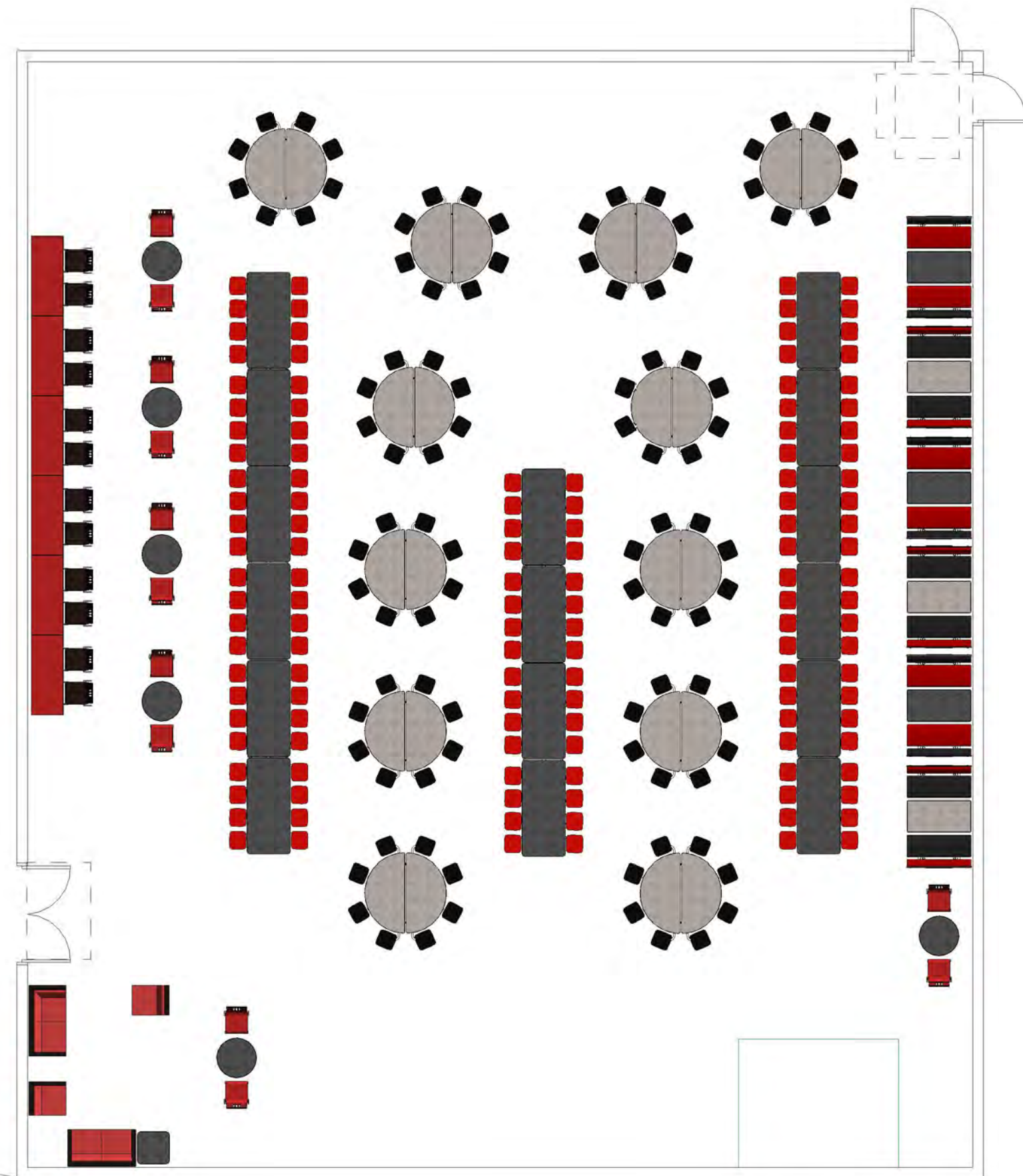


Table Top Type	Table Top #	Seat #
Lounge	--	6
2 Top	12	24
4 Tops	6	24
5 Tops	--	--
6 Tops	--	--
8 Tops	12	96
10 Tops	--	--
12 Tops	--	--
16 Tops	8	128
Total Seat Count: 278		

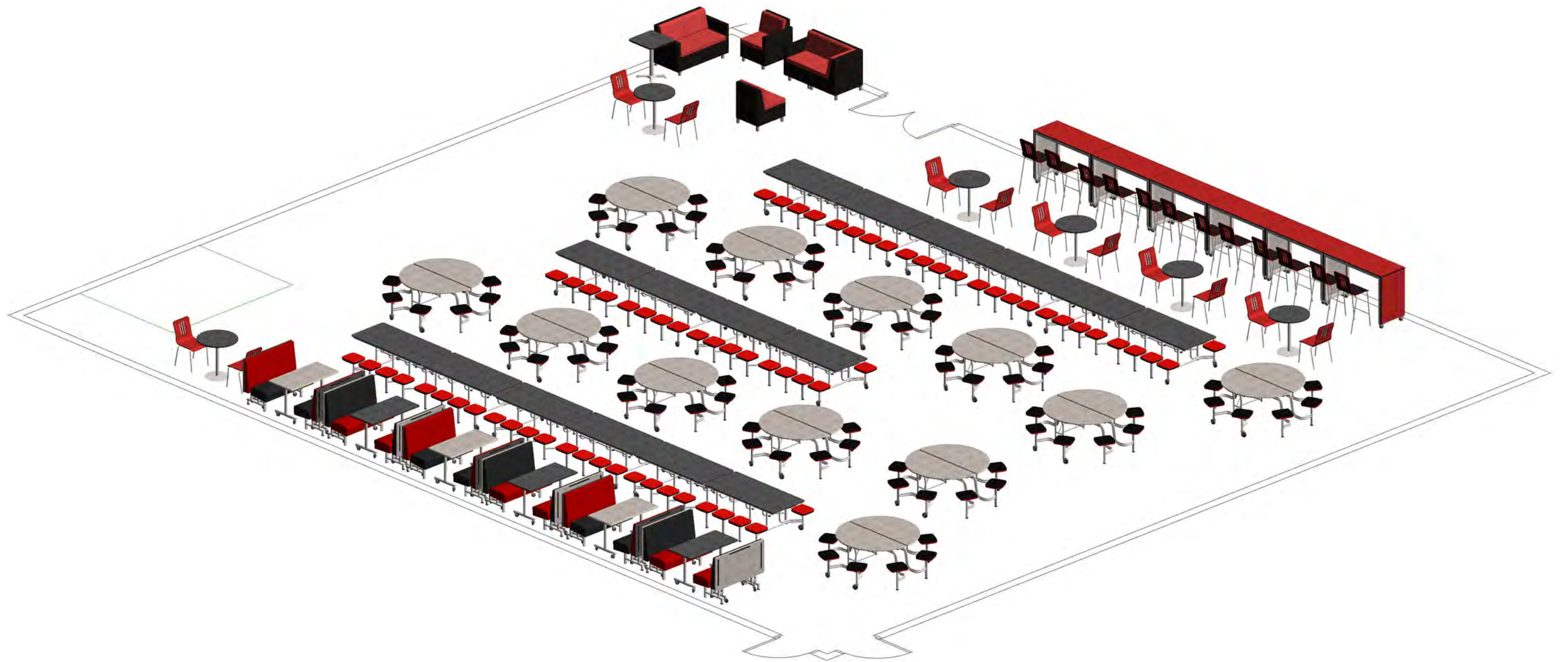
① 01 - Seating Layout
1/8" = 1'-0"





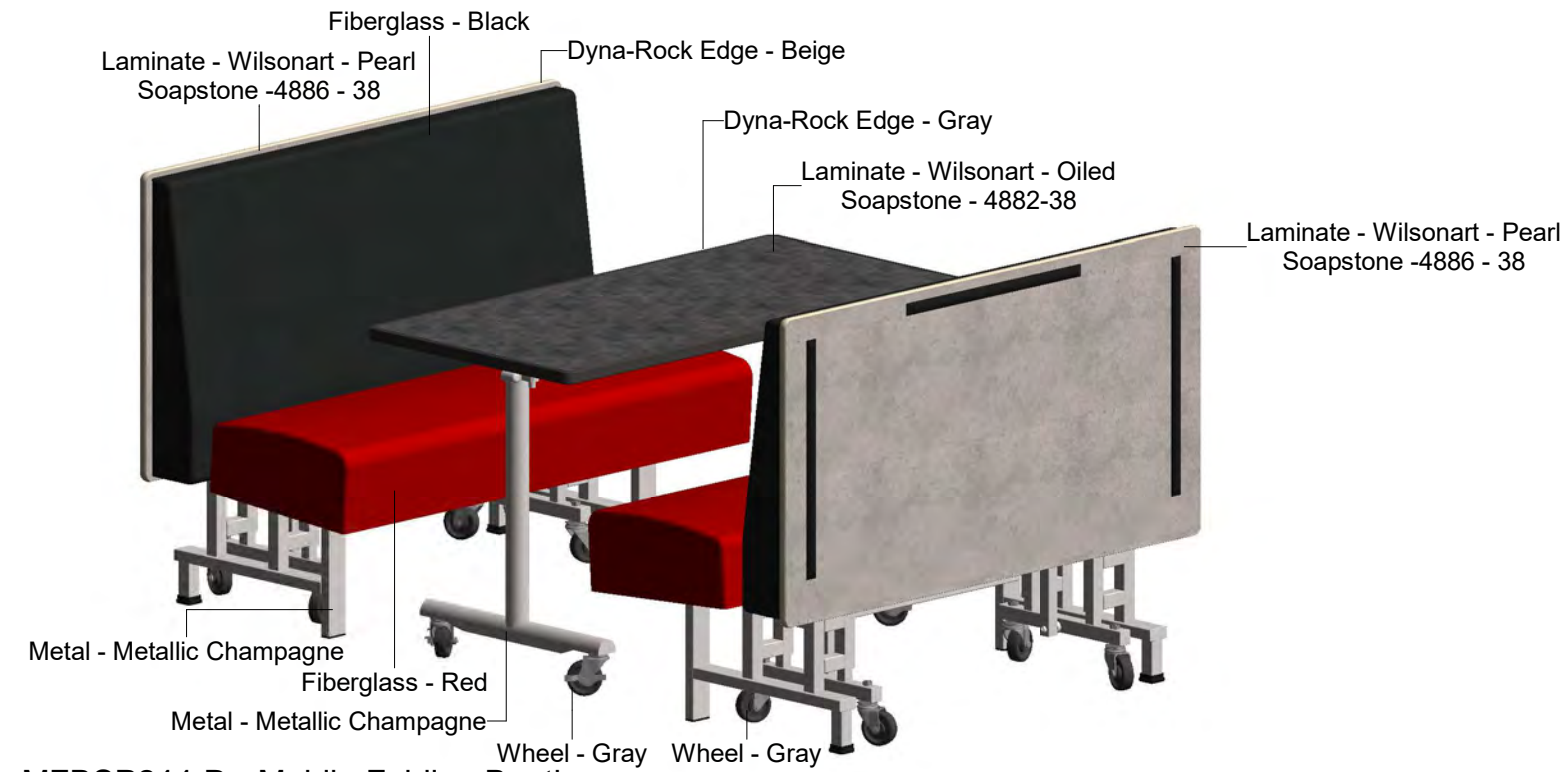
① 02 - Finish Layout
1/8" = 1'-0"





① 3D Overview

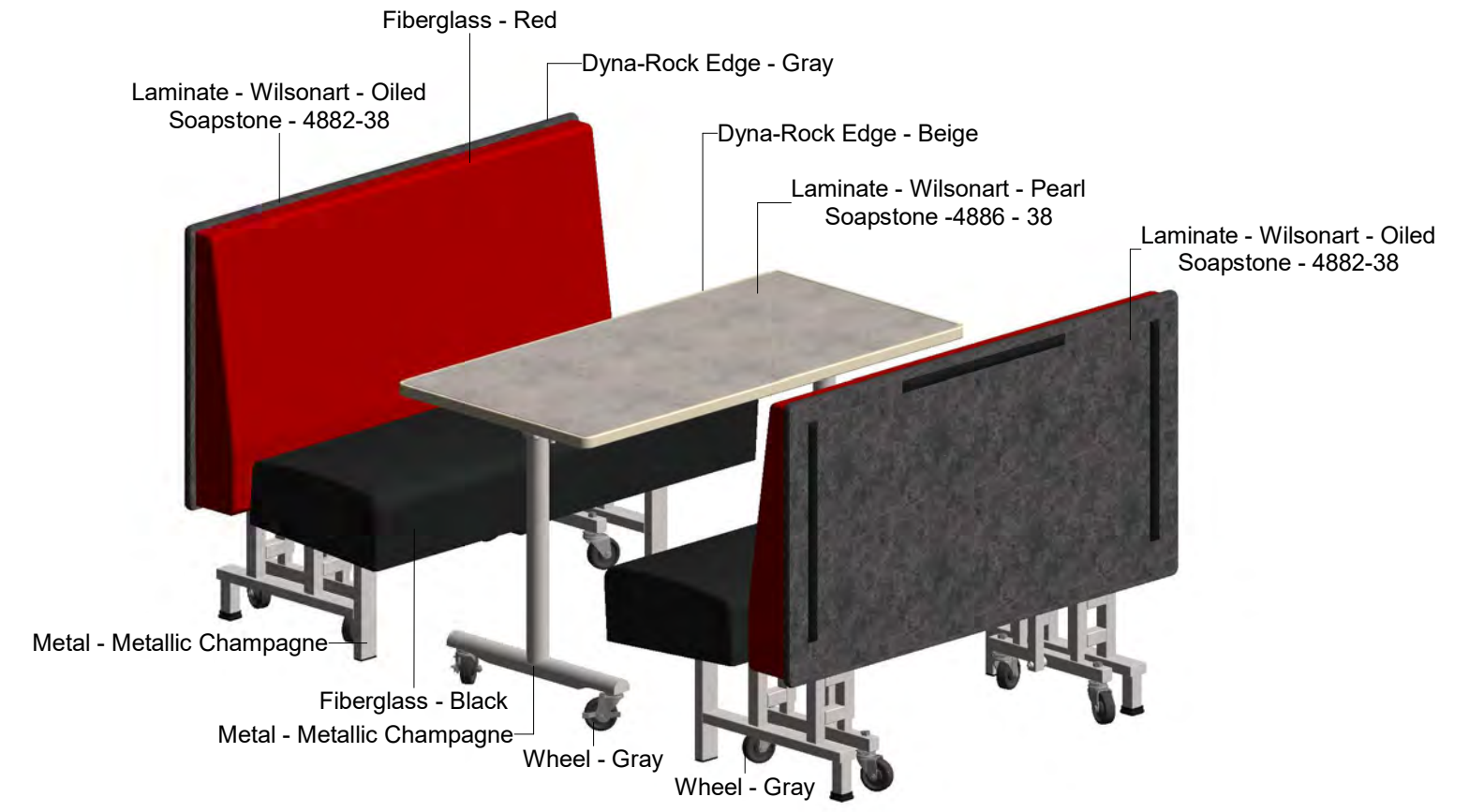
Little Wolf High School	DATE: 06-06-22	DRAWN BY: ADC	SCALE:	3D Overview	PAGE NUMBER: 4
-------------------------	-------------------	------------------	--------	-------------	-------------------



1 MFBS244-D - Mobile Folding Booth Package - Oiled Soapstone Top



3 MCT245-42H-D - Mobile Conversation Table w EssentialChair-30-D - Regimental Red Top



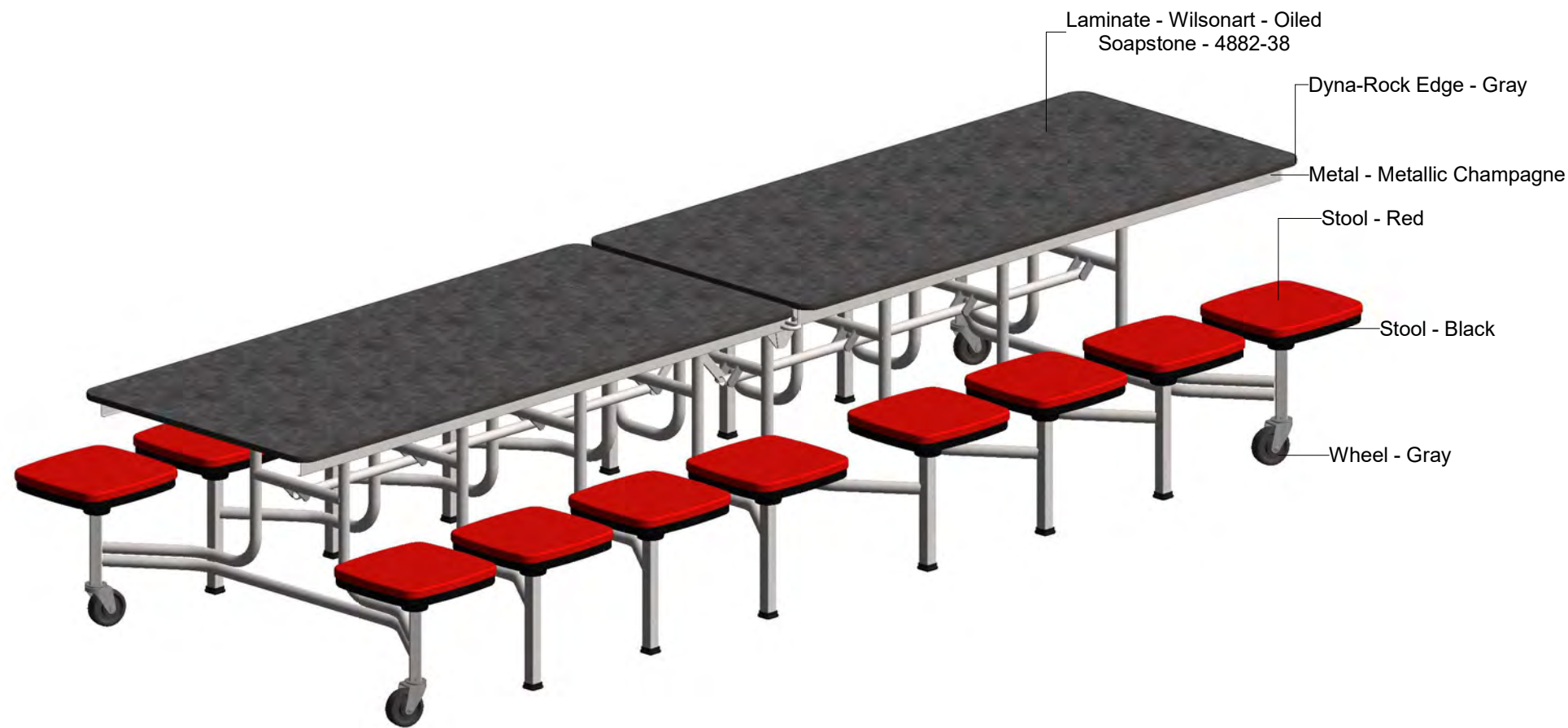
2 MFBS244-D - Mobile Folding Booth Package - Pearlstone Soapstone Top



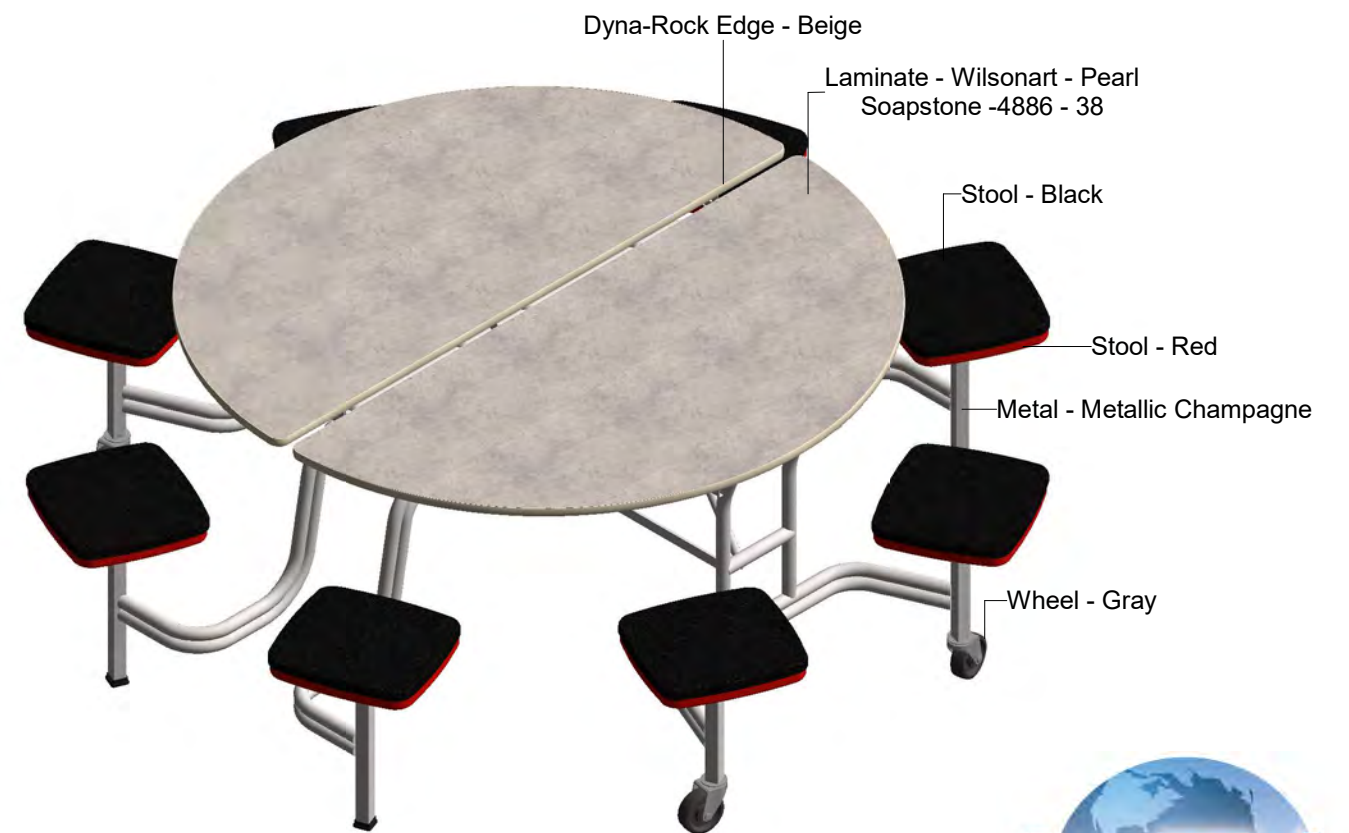
4 PTR3030-D - Round Cafe Table w EssentialChair-18-D - Oil Soapstone Top



Little Wolf High School	DATE: 06-06-22	DRAWN BY: ADC	SCALE:	Product Details	PAGE NUMBER: 5
-------------------------	-------------------	------------------	--------	-----------------	-------------------

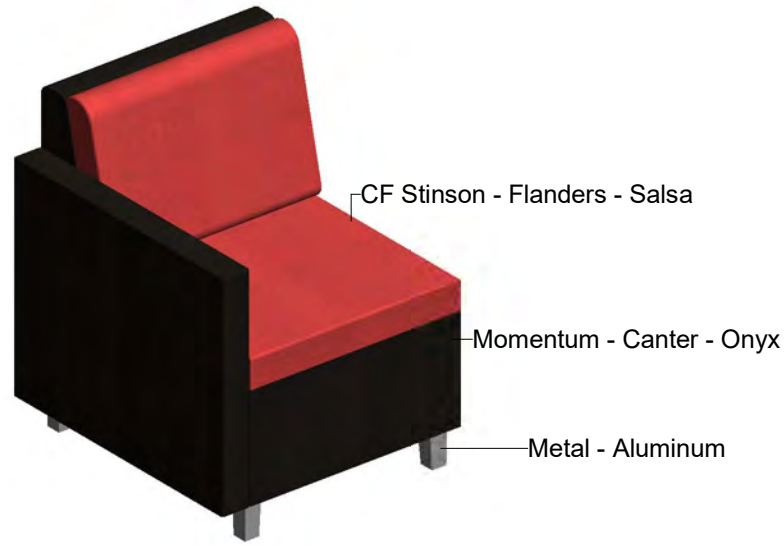


5 MST1216-D - Mobile Table w Rec Stool - Oiled Soapstone Top



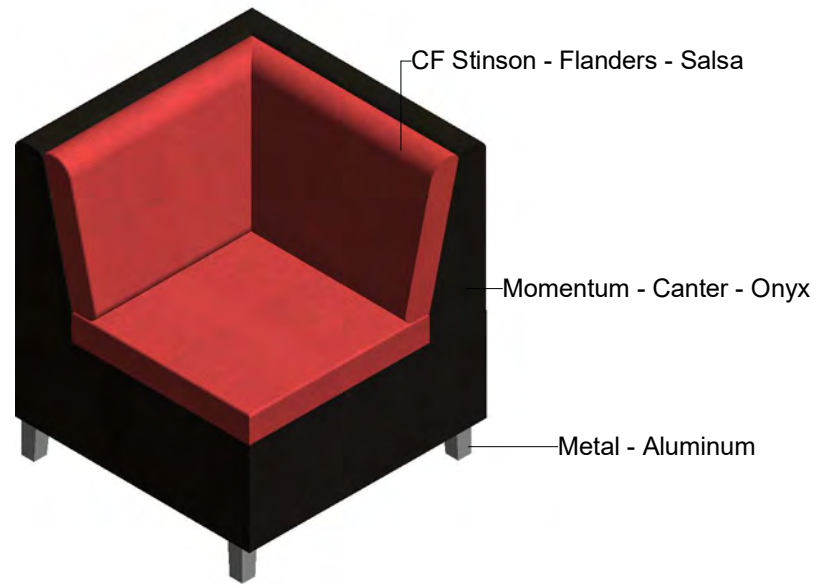
6 MSR608-D - Mobile Round Table w Rec Stool - Pearl Soapstone Top





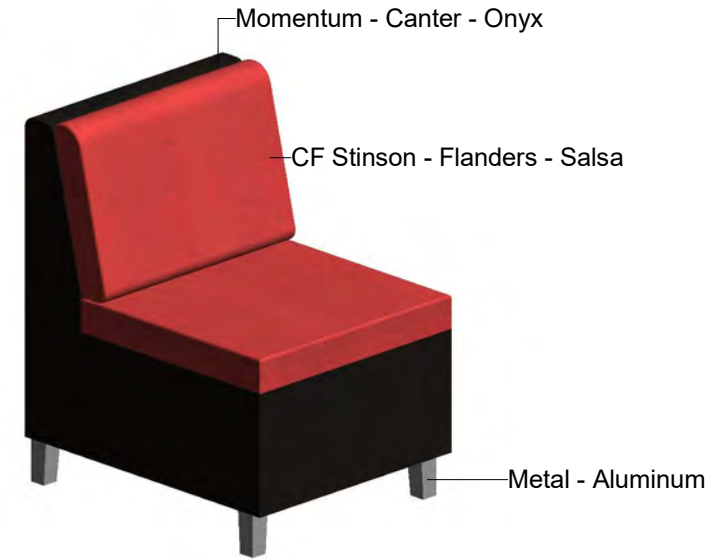
SoftSeating-02-D - 1 Seat Arm Right - Salsa Seat

7



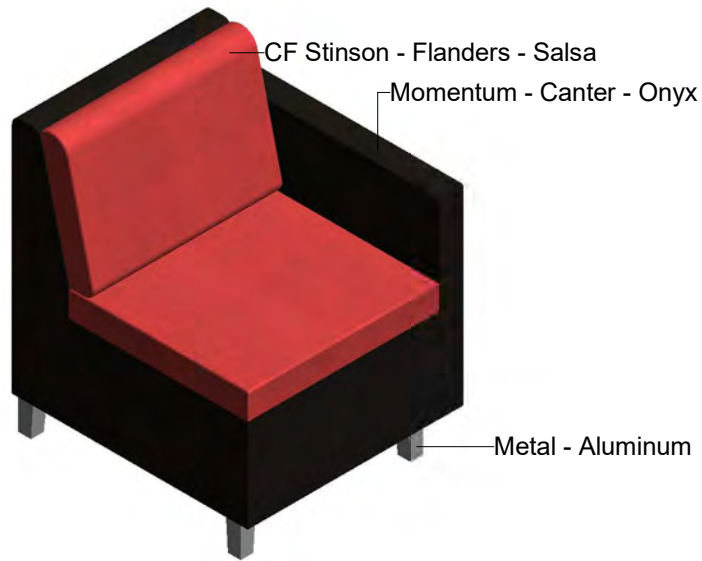
SoftSeating-13-D - Corner Armless Seat - Salsa Seat

8



SoftSeating-04-D - 1 Seat Armless Chair - Salsa Seat

9



SoftSeating-03-D - 1 Seat Arm Left - Salsa Seat

10



SoftSeating-02-D - 2 Seat Settee with 2 Arms - Salsa Seat

11



PT2430-D - Square CafeTable - Oiled Soapstone Top

12

FURNITURE

BOOTHS

Style: MFBSP244-D - Mobile Folding Booth Package -48"L
Fiberglass Backpad: Black
Fiberglass Seat: Red
Back Panel - Back Face: Laminate - Wilsonart - Pearl Soapstone -4886 - 38
Back Panel - Front Trim:Laminate - Wilsonart - Pearl Soapstone -4886 - 38
Booth Frame: Metal - Metallic Champagne
Booth Wheel Color: Standard
Table Top Size: 48"D x 80"W x 29"H
Table Top Laminate:Wilsonart - Oiled Soapstone - 4882-38
Table Edge: Dyna-Rock - Gray
Table Base Finish: Metallic Champagne
Table Wheel Color: Standard

Style: MFBSP244-D - Mobile Folding Booth Package - 48"L
Fiberglass Backpad: Red
Fiberglass Seat: Black
Back Panel - Back Face: Wilsonart - Oiled Soapstone - 4882-38
Back Panel - Front Trim:Wilsonart - Oiled Soapstone - 4882-38
Booth Frame: Metal - Metallic Champagne
Booth Wheel Color: Standard
Table Top Size: 48"D x 80"W x 29"H
Table Top Laminate:Wilsonart - Pearl Soapstone -4886 - 38
Table Edge: Dyna-Rock - Beige
Table Base Finish: Metallic Champagne
Table Wheel Color: Standard

CHAIRS

Style: EssentialChair-30-D
Back: Laminate - Wilsonart - Black - 1595
Seat: Laminate - Wilsonart - Black - 1595
Edge: Dyna-Rock - Red
Frame: Metallic Champagne

Style: EssentialChair-18-D
Back: Laminate - Wilsonart - Regimental Red - D12
Seat: Laminate - Wilsonart - Regimental Red - D12
Edge: Dyna-Rock - Black
Frame: Metallic Champagne

TABLES

Style: PTR3030-D - Round Cafe Table
Table Top Size: 30"Dia. x 30"H
Table Top Laminate: Wilsonart - Oiled Soapstone - 4882-38
Table Edge: Dyna-Rock - Gray
Base Finish: Metallic Champagne
OPTIONS
Upgrade: Dyna-Rock Edges

Style: PT2430-D - Square CafeTable
Table Top Size: 24"D x 24"W x 30"H
Table Top Laminate: Wilsonart - Oiled Soapstone - 4882-38
Table Edge: Dyna-Rock - Gray
Base Finish: Metallic Champagne
OPTIONS
Upgrade: Dyna-Rock Edges

MOBILE TABLES - ATTACHED SEATING

Style: MST1216-D - Mobile Table w Rec Stool
Table Top Size: 30"D x 145"W x 28"H
Table Top Laminate: Wilsonart - Oiled Soapstone - 4882-38
Table Edge: Dyna-Rock - Gray
Stool Type: Rectangular
Stool Top Color: Red
Stool Bottom Color: Black
Frame Finish: Metallic Champagne
Wheel Color: Standard
OPTIONS
Upgrade: Dyna-Rock Edges

Style: MSR608-D - Mobile Round Table w Rec Stool
Table Top Size: 60"Dia x 29"H
Table Top Laminate: Wilsonart - Pearl Soapstone -4886 - 38
Table Edge: Dyna-Rock - Beige
Stool Type: Rectangular
Stool Top Color: Black
Stool Bottom Color: Red
Frame Finish: Metallic Champagne
Wheel Color: Standard
OPTIONS
Upgrade: Dyna-Rock Edges

CONVERSATION TABLES

Style:MCT245-42H-D - Moble Conversation Table
Table Top Size: 24"D x 60"W x 42"H
Top Laminate: Wilsonart - Regimental Red - D12
Left External Side Panel Laminate:Wilsonart - Regimental Red - D12
Left Internal Side Panel Laminate: Wilsonart - Pearl Soapstone -4886 - 38
Right External Side Panel Laminate:Wilsonart - Regimental Red - D12
Right Internal Side Panel Laminate: Wilsonart - Pearl Soapstone -4886 - 38
Edges: Dyna-Rock - Black
Base Finish: Metallic Champagne
Wheel Color: Standard

LOUNGE SEATING

Style: SoftSeating-02-D - 1 Seat Chair with 1 Arm on the Left
Size: 27.75"W x 25.5"L x 32.5"H
Primary Upholstery: CF Stinson - Flanders - Salsa
Accent Upholstery: Momentum - Canter - Onyx
Metal Legs: Aluminum

Style: SoftSeating-13-D - Corner Armless Seat
Size: 27.75"W x 27.75"L x 32.5"H
Primary Upholstery: CF Stinson - Flanders - Salsa
Accent Upholstery: Momentum - Canter - Onyx
Metal Legs: Aluminum

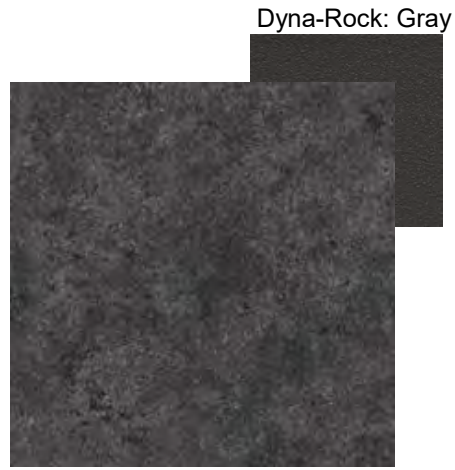
Style: SoftSeating-04-D - 1 Seat Armless Chair
Size: 27.75"W x 22.5"L x 32.5"H
Primary Upholstery: CF Stinson - Flanders - Salsa
Accent Upholstery: Momentum - Canter - Onyx
Metal Legs: Aluminum

Style: SoftSeating-03-D - 1 Seat Chair with 1 Arm on the Right
Size: 27.75"W x 25.5"L x 32.5"H
Primary Upholstery: CF Stinson - Flanders - Salsa
Accent Upholstery: Momentum - Canter - Onyx
Metal Legs: Aluminum

Style: SoftSeating-02-D - 1 Seat Chair with 1 Arm on the Left
Size: 27.75"W x 25.5"L x 32.5"H
Primary Upholstery: CF Stinson - Flanders - Salsa
Accent Upholstery: Momentum - Canter - Onyx
Metal Legs: Aluminum



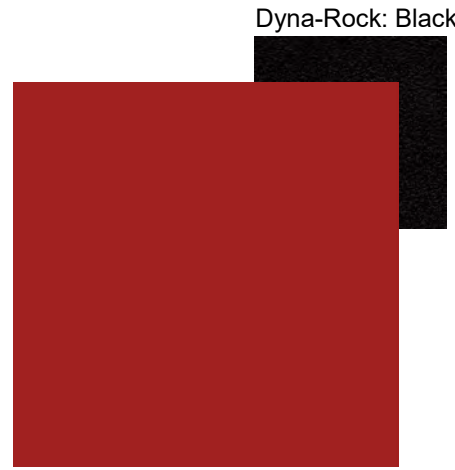
FINISHES



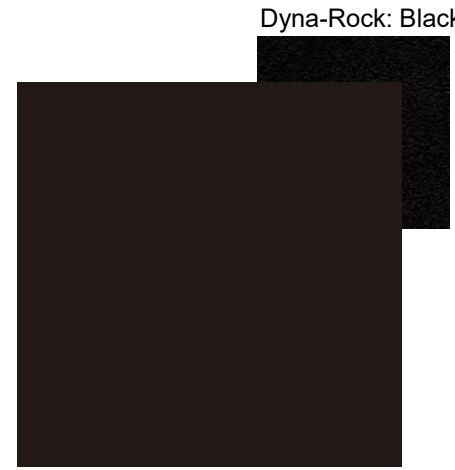
Laminate: Wilsonart - Oiled Soapstone



Laminate: Wilsonart - Pearl Soapstone



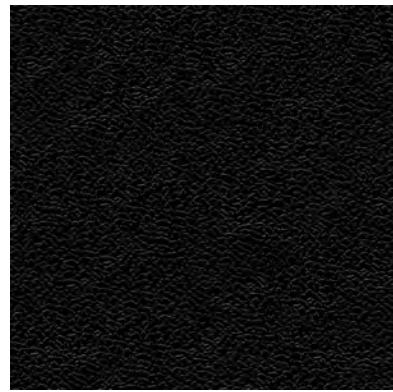
Laminate: Wilsonart - Regimental Red



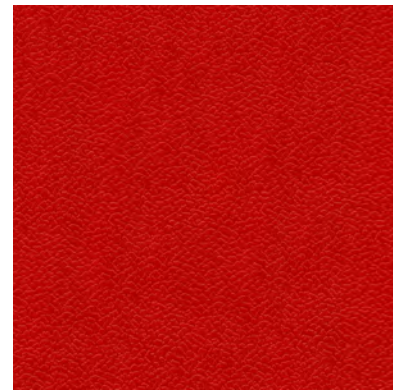
Laminate: Wilsonart - Black



Metal: Metallic Champagne



Stool: Black



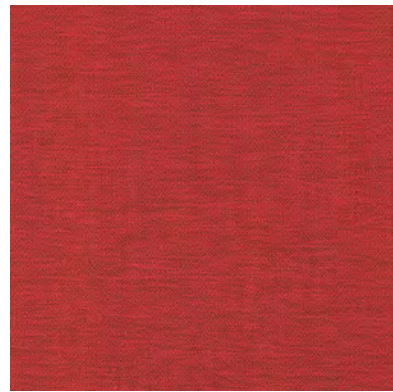
Stool: Red



Fiberglass: Black



Fiberglass: Red



Upholstery: CF Stinson - Flanders - Salsa



Upholstery: Momentum - Canter - Onyx

General Project Notes & Revision Dates:

This AmTab Design Package and related information is intended only for the confidential use of the intended recipient(s). Please keep confidential. Any review, dissemination, distribution or copying of this confidential information is strictly prohibited. Any editing or modification of this confidential information is also strictly prohibited. Thank you.

GENERAL NOTES

1. Requested seating for 275, layout includes seating for 278
2. Utilized school colors: red and black
3. Requested conversation area with lounge seating

Contact Information

Anna Trop
Senior Associate - Interior Design
Office: (630) 301-7600 x 94

Rachael Kennedy
Senior Associate - Interior Design
Office: (630) 301-7600 x 89

Cassandra Martinez
Associate - Interior Design
Office: (630) 301-7600 x 71

Erin Hinderer
Associate - Interior Design
Office: (630) 301-7600 x 122

Katelyn Adams
Associate - Interior Design
Office: (630) 301-7600 x 128

Kyle-Lynn Blaise
Associate - Interior Design
Office: (630) 301-7600 x 114

Liz Rios
Associate - Interior Design
Office: (630) 301-7600 x 107

Catherine Simeo
Associate - Interior Design
Office: (630) 301-7600 x 103

Darien Morgan
Junior Associate - Interior Design
Office: (630) 301-7600 x 125

Florence Godoy
Junior Associate - Interior Design
Office: (630) 301-7600 x 116

Furniture Schedule			
Family	Type	Description	Count
Booth Package - Mobile Folding - MFBSP	MFBSP244-29"H-D - Pearl Sandstone Top	MFBSP244	3
Booth Package - Mobile Folding - MFBSP	MFBSP244-D - 29"H-D - Oiled Soapstone Laminate Top	MFBSP244	3
Chair - EssentialChair-18	EssentialChair-18-D - Regimental Red	ECH18	12
Chair - EssentialChair-30	EssentialChair-30-D - Black Seat	ECH30	12
Conversation Table - Mobile - MCT - 42H	MCT245 - 42"H-D - Regimental Red Top	MCT245	6
Lounge - SoftSeating - Corner	SoftSeating-13-D - Corner Armless Seat - Salsa Seat	SS13	1
Lounge - SoftSeating - Straight	SoftSeating-02-D - 1 Seat Chair with 1 Arm on the Left - Salsa Seat	SS2	1
Lounge - SoftSeating - Straight	SoftSeating-03-D - 1 Seat Chair with 1 Arm on the Right - Salsa Seat	SS3	1
Lounge - SoftSeating - Straight	SoftSeating-04-D - 1 Seat Armless Chair - Salsa Seat	SS4	1
Lounge - SoftSeating - Straight	SoftSeating-05-D - 2 Seat Settee with 2 Arms - Salsa Seat	SS5	1
Table - Cafe - Round Pedestal - PTR	PTR3030-D - Oiled Soapstone Top	PTR3030	6
Table - Cafe - Square Pedestal - PT	PT2430-D - Oiled Soapstone Top	PT2430	1
Table - Mobile w Rec Stools - MSR608	MSR608 - 29"H-D - Pearl Soapstone Top	MSR608	12
Table - Mobile w Rec Stools - MST1216	MST1216 - 29"H-D - Oiled Soapstone Top	MST1216	8



Marshfield Book & Stationery Inc.



EVERYTHING FOR THE SCHOOL AND OFFICE

Quote # 2022225
 Quote Date: 06-10-2022
 Quoted By: Ted Tracanna (ted.tracanna@gmail.com)

Manawa School District
 Manawa HS

Attention: Carmen O'Brien

Comments:

Quoted from Am Tab – Bensonville III, They is an onsite delivery and installation option offered by the Manufacture that they come in set up the building, unlaod unpackage cost for that is and add of \$13,200.00

Revision Notes:

None

<u>Qty:</u>	<u>Item Description:</u>	<u>Item Price:</u>	<u>Net Price:</u>
3	AMT- MFbsp 244 Mobile Folding table and Booth Package Oiled Soapstone	\$ 5,411.00	\$ 16,233.00
3	AMT- MFbsp244 Mobile Folding table and booth Package Pearl Soapstone	\$ 5,411.00	\$ 16,514.40
12	Essintial Chair 18 Regimental Red, Black Champaign Metallic Frame	\$ 259.20	\$ 3,110.40
12	Essential Chair 30 Black, Black, Red, Champagin Metallic Frame	\$ 314.40	\$ 3,772.80
6	AMT MCT245 Conversation tables Regimental red, Pearl soapstone,	\$ 1,874.40	\$ 11,246.40
5	Soft seating are, #13,#2,#3,#4,#5, 1 each per design	\$ 13,988.60	\$ 69,943.00
6	AMT-PTR3030 Cafe Height round tables 30" with castiron base	\$ 388.80	\$ 2,332.80
1	AMT-PT2430 Square cafe table for seating area 24 x24x 30	\$ 261.60	\$ 261.60
12	AMT MSR608 60" 8 seat round tables	\$ 1,851.50	\$ 22,218.00
12	AMT MST1216 30" x12' 16 stools rectangular tables	\$ 2,063.10	\$ 24,757.20

BID QUALIFICATIONS

Please indicate "Bid per Ted" and/or quote # when ordering.
 Installation is NOT included unless otherwise stated. Standard Colors only.
 Delivery IS included unless otherwise stated.
 Terms: Net-30 days Proposal Valid for 60 Days.
 4 % fee added for credit card orders.
 Pricing subject to change per quantity ordered.

EXCLUSIONS: This quote excludes Tax, Locks, locker Base's, and any item not in the scope of work above.

I authorize MBS to proceed with the work outlined in this quote:

Sub Total: \$ 170,389.60
Tax: Included
Estimated Shipping: \$ 6,549.00
Quote Total: \$ 176,938.60

Signed: _____ Date: _____

Please scan or make a copy for yourself as needed for your personal files



2022-23 Insurance Benefits

NAME _____

(Print Name)

20 pays Aug 31-June 15
 24 pays Jun 30-Jun 15
 Sep 15-June 30
 Payroll 15th & last day of month

HEALTH	UMR-GHT Group # 76-440284	umr.com	800-207-3172 Plan year: July 1 - June 30	Eligibility: > 30 hr/wk			
	Yearly Premium	Monthly Premium	Monthly Benefit: 86% District pays	Deduction: 14% Employee pays	Per pay deduction 24 pays	Per pay deduction 20 pays	My Plan
Single	\$ 10,331.04	\$ 860.92	\$ 740.39	\$ 120.53	\$ 60.26	\$ 72.32	
Employee + 1	\$ 20,676.48	\$ 1,723.04	\$ 1,481.81	\$ 241.23	\$ 120.61	\$ 144.74	
Family	\$ 27,900.84	\$ 2,325.07	\$ 1,999.56	\$ 325.51	\$ 162.75	\$ 195.31	
I am not eligible							
I choose to waive the health insurance benefit for the current school year							
Signature (waiver only)				Date			
DENTAL	Delta Dental Employer Number: 95210 (PPO) School District of Manawa	https://www.deltadentalwi.com	800-236-3712 Plan year: July 1 - June 30	Eligibility: > 30 hr/wk			
	Yearly Premium	Monthly Premium	Monthly Benefit: 86% District pays	Deduction: 14% Employee pays	Per pay deduction 24 pays	Per pay deduction 20 pays	My Plan
Single	\$ 692.76	\$ 57.73	\$ 49.65	\$ 8.08	\$ 4.04	\$ 4.85	
Family	\$ 1,782.72	\$ 148.56	\$ 127.76	\$ 20.80	\$ 10.40	\$ 12.48	
I am not eligible							
I choose to waive the dental insurance benefit for the current school year							
Signature (waiver only)				Date			
VISION	Delta Vision: administered through EyeMed Vision Care (www.eyemedvisioncare.com) list of EyeMed providers: www.deltadentalwi.com/visionproviders or 866-723-0513 Inform provider of subscriber full name and date of birth			Eligibility: > 30 hr/wk			
	Yearly Premium	Monthly Premium	Monthly Benefit: 86% District pays	Deduction: 14% Employee pays	Per pay deduction 24 pays	Per pay deduction 20 pays	My Plan
Single	\$ 57.36	\$ 4.78	\$ 4.11	\$ 0.67	\$ 0.33	\$ 0.40	
Family	\$ 142.80	\$ 11.90	\$ 10.23	\$ 1.67	\$ 0.83	\$ 1.00	
I am not eligible							
I choose to waive the vision insurance benefit for the current school year							
Signature (waiver only)				Date			

SHORT-TERM DISABILITY Yes No **ADDITIONAL LIFE** No Yes indicate amount
 (circle) Employee \$
 Spouse \$
 Child \$

May 31, 2022

Monthly Financial Summary

	Revenues Month	Expenses Month	Revenues YTD	Expenses YTD	
Fund 10 - General	\$ 8,880.10	\$ 548,623.79	\$ 5,739,343.40	\$ 5,836,614.37	
Fund 27 - Special Education	\$ 6,334.41	\$ 80,841.90	\$ 185,483.87	\$ 817,361.24	
Fund 50 - Food Service	\$ 66,401.23	\$ 32,753.43	\$ 385,484.28	\$ 299,917.55	
Fund 80 - Community Fund	\$ 45.00	\$ 571.68	\$ 51,425.00	\$ 28,462.15	
			Interest to Date		Project Exp to Date
Fund 49 - Referendum (2018)	\$ -	\$ -	\$ 183,503.24	\$ 664,185.07	\$ 12,171,518.49
Demo Referendum Project	\$ -	\$ -	\$ -	\$ 935.00	\$ 344,657.08
Debt Payments (Fund 39)	\$ -	\$ -	\$ 1,109,282.95	\$ 816,617.56	\$ 20,342.92

Accounts	Balance	Interest Rate
General Checking	\$ 2,701,246.14	0.261%
General Money Market	\$ 5,173.57	0.011%
ADM Investment Savings	\$ 150,511.17	0.570%
Fund 21 Account	\$ 127,126.32	0.040%
OPEB	\$ 282,147.10	
Fund 46 - Savings	\$ 250,269.87	

\$ (28,957.29) Change in Value from July 2021
\$250,000 invested in CD with ADM

Grants	Allocation	Carryover	Total	Claimed to Date	Outstanding Revenue
Fund 10					
ARP Homeless Children & Youth II	\$ 6,079.00	\$ -	\$ 6,079.00	\$ -	\$ 6,079.00
Carl Perkins (Tech. Ed)	\$ 6,468.00	\$ -	\$ 6,468.00	\$ -	\$ 6,468.00
ESSER II Fund	\$ 360,845.00	\$ -	\$ 360,845.00	\$ 277,128.98	\$ 83,716.02
ESSER III Fund	\$ 810,972.00	\$ -	\$ 810,972.00	\$ -	\$ 810,972.00
Title I - Public (Reading/Math)	\$ 98,831.74	\$ 12,455.91	\$ 111,287.65	\$ 9,767.39	\$ 101,520.26
Title I - Private (Reading/Math)	\$ 21,721.26	\$ 33,384.07	\$ 54,959.63	\$ -	\$ 54,959.63
Title II - Public (Professional Dev.)	\$ 21,419.27	\$ 17,677.69	\$ 39,096.96	\$ -	\$ 39,096.96
Title II - Private (Professional Dev.)	\$ 3,145.73	\$ 3,336.35	\$ 6,482.08	\$ -	\$ 6,482.08
Title IV - Public (Student Support & Enrichment)	\$ 8,745.04	\$ 9,406.56	\$ 18,151.60	\$ -	\$ 18,151.60
Title IV - Private (Student Support & Enrichment)	\$ 1,254.96	\$ -	\$ 1,254.96	\$ -	\$ 1,254.96
Fund 27					
Flow Through (SPED) - Public	\$ 180,042.28	\$ 39,594.90	\$ 219,637.18	\$ -	\$ 219,637.18
Flow Through (SPED) - Private	\$ 29,673.72	\$ -	\$ 29,673.72	\$ -	\$ 29,673.72
Preschool (Early Childhood) - Public	\$ 11,011.00	\$ 3,216.17	\$ 14,227.17	\$ -	\$ 14,227.17
Preschool (Early Childhood) - Private	\$ 847.00	\$ -	\$ 847.00	\$ -	\$ 847.00

Revenues	Budgeted	Collected to Date	Outstanding	2020-21
Property Taxes	\$ 2,372,375.00	\$ 1,424,904.41	\$ 947,470.59	\$ 2,660,335.00
Mobile Home Tax	\$ 1,200.00	\$ 2,723.09	\$ (1,523.09)	\$ 3,135.25
Athletic Event Admission	\$ 9,000.00	\$ 12,961.00	\$ (3,961.00)	\$ 4,845.50
Open Enrollment In	\$ 185,982.00	\$ -	\$ 185,982.00	\$ 126,073.00
Transportation Aid	\$ 20,000.00	\$ 12,045.00	\$ 7,955.00	\$ 23,718.00
Equalization Aid	\$ 4,785,653.00	\$ 3,110,674.00	\$ 1,674,979.00	\$ 4,451,438.00
Sparsity Aid	\$ 248,935.00	\$ 262,030.00	\$ (13,095.00)	\$ 272,553.00
Per Pupil Aid	\$ 492,688.00	\$ 491,946.00	\$ 742.00	\$ 509,754.00
High-Cost Transportation Aid	\$ 30,000.00	\$ -	\$ 30,000.00	\$ 31,495.00

Fund 10 Expenses	2020-21 FY Activity	2021-22 Budget	2021-22 FYTD Activity	Percent Expended to Date	Unexpended Balance
Salaries	\$ 3,321,788.20	\$ 3,333,336.00	\$ 2,696,731.11	80.90%	\$ 636,604.89
Benefits	\$ 1,446,389.77	\$ 1,433,810.00	\$ 1,156,700.40	80.67%	\$ 277,109.60
Purchased Services	\$ 2,207,983.45	\$ 2,538,717.00	\$ 1,399,238.87	55.12%	\$ 1,139,478.13
Non-Capital Objects	\$ 410,798.90	\$ 215,288.00	\$ 347,995.32	161.64%	\$ (132,707.32)
Capital Objects	\$ 233,594.24	\$ 103,200.00	\$ 92,431.79	89.57%	\$ 10,768.21
Debt Retirement	\$ -	\$ -	\$ -		\$ -
Insurance & Judgments	\$ 132,447.10	\$ 112,750.00	\$ 107,596.75	95.43%	\$ 5,153.25
Transfers (i.e. to Fund 27)	\$ 559,363.85	\$ 637,271.00	\$ -	0.00%	\$ 637,271.00
Other (Dues & Fees)	\$ 27,389.93	\$ 260,434.26	\$ 35,920.13	13.79%	\$ 224,514.13
TOTAL	\$ 8,339,755.44	\$ 8,634,806.26	\$ 5,836,614.37	67.59%	\$ 2,798,191.89

Fund 50 - Revenues	Monthly Total	2021-22 FYTD	2020-21 FYTD
MES Sales	\$ 876.15	\$ 7,377.20	\$ 5,877.70
MMS Sales	\$ 2,842.60	\$ 23,413.30	\$ 14,269.45
LWHS Sales	\$ 3,529.30	\$ 33,286.60	\$ 25,053.15
Catering	\$ 699.15	\$ 2,858.38	\$ 4,183.72
Aid	\$ 58,454.03	\$ 318,548.80	\$ 197,140.84
Total	\$ 66,401.23	\$ 385,484.28	\$ 246,524.86
Fund 50- Expenses			
Salaries	\$ 11,302.26	\$ 108,380.56	\$ 100,768.86
Benefits	\$ 3,696.32	\$ 38,786.87	\$ 37,597.66
Purchased Services	\$ -	\$ -	\$ -
Repair/Maintenance	\$ -	\$ 12,325.38	\$ 679.87
Operational Services	\$ -	\$ 935.41	\$ 557.94
Employee Travel	\$ -	\$ -	\$ -
Fuel - Vehicle	\$ -	\$ 102.00	\$ 116.00
Commodity Charges	\$ 2,907.92	\$ 9,201.96	\$ 11,143.73
Central Supply	\$ 1,119.06	\$ 12,553.51	\$ 10,758.25
Food	\$ 12,383.63	\$ 116,271.07	\$ 93,105.43
Other Non-Capital Objects	\$ -	\$ 16.55	\$ -
Capital Equipment	\$ 1,344.24	\$ 1,344.24	\$ -
Total	\$ 32,753.43	\$ 299,917.55	\$ 254,727.74
	End June 2021	Rev-Exp FYTD	
Fund 50 Balance	\$ 118,273.00	\$ 85,566.73	

**DEPARTMENT OF PUBLIC INSTRUCTION
2021-22 REVENUE LIMIT WORKSHEET**

DISTRICT:	Manawa	3276
------------------	--------	------

DATA AS OF 10/15/2021, 7:00 AM

Line 1 Amount May Not Exceed (Line 11 - (Line 7B+Line 10)) of Final 20-21 Revenue Limit

2020-21 General Aid Certification (20-21 Line 12A, src 621)	+	4,451,438
2020-21 Computer Aid Received (20-21 Line 12C, Src 691)	+	2,940
2020-21 Hi Pov Aid (20-21 Line 12B, Src 628)	+	0
2020-21 Aid for Exempt Personal Property (20-21 Line 12D, Src 691)	+	6,295
2020-21 Fnd 10 Levy Cert (20-21 Line 14A, Levy 10 Src 211)	+	2,660,335
2020-21 Fnd 38 Levy Cert (20-21 Line 14B, Levy 38 Src 211)	+	0
2020-21 Fnd 41 Levy Cert (20-21 Line 14C, Levy 41 Src 211)	+	0
2020-21 Aid Penalty for Over Levy (20-21 <u>FINAL</u> Rev Lim, May 2021)	-	0
2020-21 Total Levy for All Levied Non-Recurring Exemptions*	-	251,008
NET 2021-22 Base Revenue Built from 2020-21 Data (Line 1)	=	6,870,000

*For the Non-Recurring Exemptions Levy Amount, enter actual amount for which district levied; (7B Hold Harmless, Non-Recurring Referenda, Declining Enrollment, Energy Efficiency Exemption, Refunded/Rescinded Taxes, Prior Year Open Enrollment Pupils, Reduction for Ineligible Fund 80 Expends, Other Adjustments, Private School Voucher Aid Deduction, Private School Special Needs Voucher Aid Deduction)

September & Summer FTE Membership Averages

Count Ch. 220 Inter-District Resident Transfer Pupils @ 75%.

Line 2: Base Avg:((18+.4ss)+(19+.4ss)+(20+.4ss)) / 3 = **687**

	2018	2019	2020
Summer FTE:	18	15	9
% (40,40,40)	7	6	4
Sept FTE:	699	677	667
New ICS - Independent	0.00	0.00	0.00
Charter Schools FTE			
Total FTE	706	683	671

Line 6: Curr Avg:((19+.4ss)+(20+.4ss)+(21+.4ss)) / 3 = **663**

	2019	2020	2021
Summer FTE:	15	9	13
% (40,40,40)	6	4	5
Sept FTE:	677	667	630
New ICS - Independent	0.00	0.00	0.00
Charter Schools FTE			
Total FTE	683	671	635

The Line 6 "Current Average" shown above is used for Revenue Limits. The average used for Per Pupil Aid does not include "New ICS - Independent Charter Schools FTE." The PPA average appears below after data is entered for 2021:

663

Line 10B: Declining Enrollment Exemption =	240,000
Average FTE Loss (Line 2 - Line 6, if > 0)	24
X 1.00 =	24
X (Line 5, Maximum 2020-2021 Revenue per Memb) =	10,000.00
Non-Recurring Exemption Amount:	240,000

Fall 2021 Property Values

2021 TIF-Out Tax Apportionment Equalized Valuation(estimate until Oct, 2021) 416,687,618

CELL COLOR KEY: Auto-Calc DPI Data District-Entered

Worksheet is available at: <http://dpi.wi.gov/sfs/limits/worksheets/revenue>

Calculation Revised: 8/5/2020. Rounding in Total FTE buckets.

**DEPARTMENT OF PUBLIC INSTRUCTION
2021-22 REVENUE LIMIT WORKSHEET**

2021-2022 Revenue Limit Worksheet		
1. 2021-22 Base Revenue (Funds 10, 38, 41)	(from left)	6,870,000
2. Base Sept Membership Avg (2018+.4ss, 2019+.4ss, 2020+.4ss)/3	(from left)	687
3. 2021-22 Base Revenue Per Member (Ln 1 / Ln2)	(with cents)	10,000.00
4. 2021-22 Per Member Change (A+B)		0.00
2021-22 Low Revenue Ceiling per s.121.905(1):		
A. Allowed Per-Member Change for 21-22	10,000.00	
B. Low Rev Incr ((Low Rev Ceiling-(3+4A))-4C) NOT<0	0.00	
C. Value of the CCDEB (21-22 DPI Computed-CCDEB Dists only)	0.00	
5. 2021-22 Maximum Revenue / Member (Ln 3 + Ln 4)		10,000.00
6. Current Membership Avg (2019+.4ss, 2020+.4ss, 2021+.4ss)/3	(from left)	663
7. 2021-22 Rev Limit, No Exemptions (Ln7A + Ln 7B)	(rounded)	6,870,000
A. Max Rev/Memb x Cur Memb Avg (Ln 5 x Ln 6)	6,630,000	
B. Hold Harmless Non-Recurring Exemption	240,000	
8. Total 2021-22 Recurring Exemptions (A+B+C+D+E)	(rounded)	0
A. Prior Year Carryover	0	
B. Transfer of Service	0	
C. Transfer of Territory/Other Reorg (if negative, include sign)	0	
D. Federal Impact Aid Loss (2019-20 to 2020-21)	0	
E. Recurring Referenda to Exceed (If 2021-22 is first year)	0	
9. 2021-22 Limit with Recurring Exemptions (Ln 7 + Ln 8)		6,870,000
10. Total 2021-22 Non-Recurring Exemptions (A+B+C+D+E+F+G+H+I)		297,778
A. Non-Recurring Referenda to Exceed 2021-22 Limit	0	
B. Declining Enrollment Exemption for 2021-22 (from left)	240,000	
C. Energy Efficiency Net Exemption for 2021-22 (see pg 4 for details)	0	
D. Adjustment for Refunded or Rescinded Taxes, 2021-22	0	
E. Prior Year Open Enrollment (uncounted pupil[s])	14,806	
F. Reduction for Ineligible Fund 80 Expenditures (<u>enter as negative</u>)	0	
G. Other Adjustments (Fund 39 Bal Transfer)	0	
H. WPCP and RPCP Private School Voucher Aid Deduction	42,972	
I. SNSP Private School Voucher Aid Deduction	0	
11. 2021-22 Revenue Limit With All Exemptions (Ln 9 + Ln 10)		7,167,778
12. Total Aid to be Used in Computation (12A + 12B + 12C + 12D)		4,795,403
A. 2021-22 OCTOBER 15 CERT OF GENERAL AID	4,785,653	
B. State Aid to High Poverty Districts (not all districts)	0	
C. State Aid for Exempt Computers (Source 691)	2,940	
D. State Aid for Exempt Personal Property (Source 691)	6,810	
DISTRICTS MUST USE THE OCT 15 AID CERT WHEN SETTING THE DISTRICT LEVY.		
13. Allowable Limited Revenue: (Line 11 - Line 12) (10, 38, 41 Levies)		2,372,375
14. Total Limited Revenue To Be Used (A+B+C)	Not >line 13	2,372,375
Entries Required Below: Enter amnts needed by purpose and fund:		
A. Gen Operations: Fnd 10 Src 211	2,372,375	(Proposed Fund 10)
B. Non-Referendum Debt (inside limit) Fund 38 Src 211	0	(to Budget Rpt)
C. Capital Exp, Annual Meeting Approved: Fund 41 Src 211	0	(to Budget Rpt)
15. Total Revenue from Other Levies (A+B+C+D)		1,159,234
A. Referendum Apprvd Debt (Fund 39 Debt-Src 211)	1,109,234	
B. Community Services (Fund 80 Src 211)	50,000	(to Budget Rpt)
C. Prior Year Levy Chargeback for Uncollectible Taxes (Src 212)	0	(to Budget Rpt)
D. Other Levy Revenue - Milwaukee & Kenosha Only	0	(to Budget Rpt)
16. Total Fall, 2021 ESTIMATED All Fund Tax Levy (14A + 14B + 14C + 15)		3,531,609
<i>Line 16 is the total levy to be apportioned in the PI-401.</i>	Levy Rate =	0.00847544

Districts are responsible for the integrity of their revenue limit data & computation. Data appearing here reflects information submitted to DPI and is unaudited.

**DEPARTMENT OF PUBLIC INSTRUCTION
2021-22 REVENUE LIMIT WORKSHEET**

Revenue Limit Summary

Category	Amount
Allowable Limited Revenue	2,372,375.00
Fund 10, PI-401	2,372,375.00
Fund 38, PI-401	0.00
Fund 41, PI-401	0.00
Line 14 Total (Revenue Limit Levies)	2,372,375.00
Over Levy	0.00
Under Levy	0.00
Carryover to FY22, if applicable	#VALUE!

21-22 Base-Building Information	Amount
Total non-recurring exemptions (10 + 7B)	537,778.00
Levied total non-recurring exemptions*	537,778.00

*to be removed from next year's base

**DEPARTMENT OF PUBLIC INSTRUCTION
2021-22 REVENUE LIMIT WORKSHEET**

Manawa ▼

2021-22 ENERGY EFFICIENCY EXEMPTION NET TOTAL - LINE 10C.

(Carry bright yellow box amount to Line 10C. on page 1. See detail computation boxes below.)

ENTER ALL NUMBERS AS POSITIVE EXCEPT WHERE INDICATED. FORMULAS WILL AUTO-CALCULATE.

1.) 2019-20 Adjustment for Unspent Debt Energy Exemption (see box below)	\$0
2.) 2020-21 Adjustment for Unspent Non-Debt Energy Exemption (see box below)	\$0
3.) 2021-22 EE Expenses for Non-Debt (1-Year Project) per Board Resolution	\$0
4.) 2021-22 EE Expenses for Debt per Board Resolution	\$0
5.) Measured Utility Savings Applied to 2021-22 (entered as a negative)	\$0
6. Total 2021-22 Energy Efficiency Exemption (carry to Line 10 C. on page 2)	\$0

(Amount can be < 0.)

The 2021-22 Net EE exemption will include adjustments for unspent Fall, 2019 Levy (DEBT) and Fall, 2020 Levy (NON-DEBT) BOE resolutions. Actual expenditures will be reported to DPI by your auditor in September, 2021 via the PI-1506-AC. Until then, districts are to enter their estimates of expenditures made related to the respective EE BOE resolutions.

If, after you enter your anticipated expenditures, negative numbers appear in Line 1 (cells X38 and X46) in either or both the 2019-20 or 2020-21 tables below, this indicates the estimated expenditures entered are less than the amount of the exemption that year. Call a School Finance Consultant if you have questions.

2019-20 Energy Efficiency Reconciliation - Debt

1.) 2019-20 Adjustment for Unspent Energy Exemption (-A+B+C, can be < 0)	\$0
A. 2019-20 EE Debt Amount Levied (per 19-20 PI-1506-AC, entered as a negative)	\$0
B. Jan-Jun 2020 Debt Service Payment (per 19-20 PI-1506AC)	\$0
C. Jul-Dec 2020 Debt Service Payment (per 20-21 PI-1506AC)	\$0

(If Line 1 in this box is < 0, see 2019-20 Adjustment in "2021-22 Net Energy Efficiency Exemption" box above.)

2020-21 Energy Efficiency Reconciliation - Non-Debt

1.) 2020-21 Adjustment for Unspent Energy Exemption (-A+B, can be < 0)	\$0
A. 2020-21 EE Non-Debt Amount Levied (per 20-21 PI-1506-AC, entered as a negative)	\$0
B. 2020-21 Actual EE Expenses (per 20-21 PI-1506AC)	\$0

(If Line 1 in this box is < 0, see 2020-21 Adjustment in "2021-22 Net Energy Efficiency Exemption" box above.)